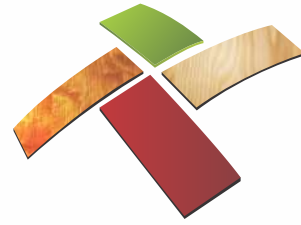


CHIMIQUE SOL[®]
ISO 9001:2015



CHIMIQUE SOL[®]
ISO 9001:2015

WE ARE MANUFACTURER AND SUPPLIER OF EPOXY FLOOR.

"**Chimique sol**" is driving innovation across the commercial, architectural & industrial flooring market. As one of the leading manufacturers of waterproofing , & flooring material, **Chimique sol** is continuously striving to deliver quality products & services.

OUR SPECIALIZATIONS ARE:

Epoxy Flooring :

PU Coating :

PU Concrete :

ESD/ Antistatic Epoxy Flooring :

Metallic Flooring :3-D Flooring :

Decorative / Multi Colour Flooring :

Epoxy PU Car park flooring :

Waterproofing :

EPOXY FLOORING

Chimique sol's comprehensive range of industrial Epoxy flooring Coating products is designed for with standing the harsh conditions that are common to heavy duty environments.

Material : CS - 24, CS - 60, Silica 4010, Quartz 50_150, Quartz 30_ 80, CS - SLE

BENEFITS:

- Excellent Gloss
- Abrasion resistant
- Attractive, brightens up dull factories and warehouses
- Hard-wearing
- Solvent free; low odour
- Seamless and hygienic finish



PU COATING

Chimique sol is engaged in offering superior quality & wide range of PU Flooring Coating Service for indoor as well as outdoor applications .

Material : CS - 24, CS - 70, Silica 5010, Quartz 50_80, CS - PU SL

BENEFITS:

- Excellent Abrasion resistant
- Thin coat, Economical
- Semi gloss & matt finish
- Chemical resistant
- Fast return to service



PU Concrete :

CS CON 49 is a 4 K PU Cementitious floor coating. From laying the CS CON 49 to daily use, regular cleaning and maintenance there are many advantages for processors and ultimately users of this building material. Here are some advantages of PU Concrete in an overview.

Material : Chimicrete - PU (Part -A + B + C + D)

BENEFITS:

- Fast Curing
- Abrasion - Resistant
- Good Levelling Properties
- Slip Resistant
- Chemical - Resistant



ESD/ANTISTATIC EPOXY FLOORING

Chimique sol's range of antistatic flooring products has successfully proven to prevent harmful electrical charge build-up from destroying sensitive components by dissipating the charge safely to the ground. Chimique sol makes available both conductive and static-dissipative flooring systems.

Material : CS - 24, CS - 60, CS - 1030, Silica 4010, Quartz 50_150, Quartz 30_80, CS - ESD

BENEFITS:

- Electro statically conductive
- Hard wearing resistance
- High chemical resistant
- Good abrasion resistant



CHIMIQUE SOL®
ISO 9001:2015

METALLIC FLOORING

Chimique sol's Metallic floorings are an exciting new seamless flooring system that provides a unique three dimensional appearance with suspended reflective pigments. Due to the vast options offered within this system, one can create floors that range from the elegantly stylish to outrageously bazaar. The exceptionally durable epoxy combined with a polyurethane or poly aspartic top coat make this flooring system ideally suited for nearly any commercial or residential setting.

These coatings create a glossy and deep-looking floor that can contain a variety of colors and visual effects. Some even have a beautiful three-dimensional appearance that gives the illusion of craters, ripples, and swirling rivers of metallic-looking plasma. Maintenance is easy, and the amount of light they reflect is outstanding due to the glossy nature of the surface.



Material :

CS - 24

CS - 60

Silica 4010

Quartz 50_150

CS - METALUXE

PEARL PIGMENT

3-D FLOORING

Chimique sol 3D Epoxy Flooring is an incredibly huge selection of colors, images and materials which promises unique & world class effect & aesthetics. Incredibly huge selection of colors and materials to create them suggests that this method is a promising device gender and popular lately.

The finished look is a smooth, glass-like finish that has a unique and subtle reflective sparkle. Just like acid stained concrete floors. There are endless creative techniques that can be used to create a custom style or effect for your garage, home or business.

Material : CS - 24, CS - 60, CS - 1030, Silica 4010, Quartz 50_150, Vinyl 3M Print, CS - 555



DECORATIVE / MULTI COLOUR FLOORING

Chimique sol's decorative resin systems offer attractive, eye-catching surfaces for public & private venues and institutional facilities without compromising the performance benefits of traditional polymer flooring.

Available in a range of smooth, granules, flaked and stone finishes, these seamless solutions can be installed in complicated and intricate patterns. Manufactured in virtually any color way or using a hand-picked quartz aggregate or flake blend to create stunning surfaces that won't go unnoticed.

Material : CS - 24, CS - 60, CS - 1030, Silica 4010, Quartz 50_150, Quartz 30_ 80 Colour, CS - SLE



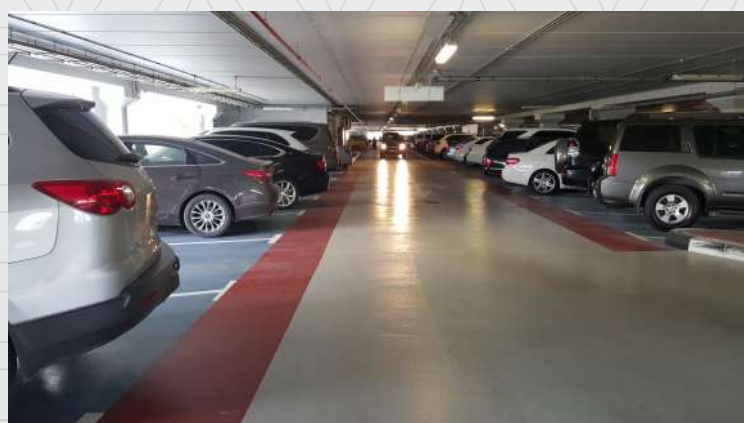
EPOXY / PU CAR PARK FLOORING

Chimique sol's car park protection systems have been designed to meet contemporary requirements for car park environments, helping to enhance the aesthetic appearance, improve light reflectivity, reduce noise from tyre squeal and prevent water ingress into any car parking structure.

BENEFITS:

- Excellent aesthetic value
- UV resistant
- High flexibility
- Anti skid
- Excellent abrasion resistance
- Variety of colour options

Material : CS - 24, CS - 60, CS - 1030, Silica 4010, Quartz 50_150, Quartz 30_ 80 Colour, CS - PU SL



WATERPROOFING

Chimique Sol has a very long proven track record for waterproofing of roofs & terraces .

The expertise lies right from surface preparation by skilled manpower upto laying of the material in the required manner. We offer Terrace Water Proofing services of international standards which are durable & affordable.

Chimique Sol's solution for waterproofing walls without breaking the plaster has been proved since decades.

Treatment includes Surface preparation and applying hydrophobic, breathable sealer that impregnates deep inside the surface due to low surface tension and is resistant to the alkalinity of cement plastered surface.

Chimique Sol has a solution to all your bathroom & kitchen leakage problems, which is carried out by a highly skilled application team using the latest technology in surface preparation & the finest material.

Chimique Sol is a manufacturer and supplier of heat insulation coating which is used as a summer cool paint, thermal insulation paint, waterproof coatings. We specialize in roof heat solutions where the temperature is reduced & simultaneously waterproof coating needs are also met.

Chimique Sol professional team has a expertise for expansion joints & sealants for all vertical as well as horizontal surfaces.

Our Water Tank Waterproofing service includes internal & exeternal waterproofing with & without epoxy high build coating. The system is robust & carried out by a team of professionals, who follows streamline methodology that the latest equipment & technology.





Head Office
280-82, Diamond Nagar Part-1,
Laskana, Surat-394185, Gujarat.

Brance Office
G-234, Sector-63, Noida-201301,
Uttar Pradesh.

+91 99094 58009
+91 99097 75974

OUR CLIENTS

